

Monthly Weather Summary in Thailand April 2021

Under the influence of the heat low pressure cell occasionally covered upper Thailand and the southerly winds prevailing over Thailand almost the whole month, the weather condition was hot to very hot in many area of upper Thailand. Meanwhile, the weather turned to hot in most of southern part mainly in the upper portion. However, the mean temperature were below the 1981-2010 normal in all parts because the occasional rain and thunderstorm over Thailand. Effect of the ridge of high pressure area from China extended to cover upper Thailand and South China sea, the passage of the westerly trough moved through the northern and northeastern parts during 4-6 and 17-19 in addition with the active low pressure cell covering the Andaman Sea during early month brought average total rainfall over Thailand was 96 percent higher than normal. Monthly rainfall in all parts was above normal i.e. northern part 124.9 mm (175%), northeastern part 67.3 mm (78%), central part 86.3 mm (109%), eastern part 91.1 mm (92%) southern part (east coast) 15.4 mm (20%) and southern part (west coast) 108.7 mm (68%).

1 – 10 April: The southerly and the southeasterly winds prevailed over lower northern, northeastern, central and eastern parts almost the period in addition with the heat low pressure cell covered upper Thailand during early and late period. During mid period, the moderate high pressure area from China extended its ridge to cover the mentioned areas and the westerly trough moved to cover the northern part. These condition caused hot weather in most areas of upper Thailand during early and late period and very hot weather in many places during early period. The highest maximum temperature was 41.7 °C at Amphoe Chaibadan in Lop Buri province on 2. For rainfall, it was found over upper Thailand almost the period especially scattered to fairly widespread rain with heavy to very heavy rainfall in some areas during mid period and the highest daily rainfall was 153.0 mm at Amphoe Khlung in Chantaburi province on 6. Thunderstorm and gusty wind occurred at Nan Pichit, Chiang Rai, Uttaradit, Lamphang, Tak SuKhothai, Phitsanulok, Phetchabun, Phayao, Chiang Mai, Kamphaeng Phet, Phare, Nakhon Phanom, Mukdahan, Si Saket, Nakhon Ratchasima, Udon Thani, Sakon Nakhon, Nong Bua Lam Phu, Surin, Loei, Khon Khen, Roi Et, Maha Sarakham, Ubon Ratchathani, Buriram, Chaiyaphum, Yasoton, Chai Nat, Singburi, นครสวรรค์, Uthai Thani, Saraburi, Angthong, Prachinburi, Rayong, Chachoengsao, Chonburi and Chantaburi provinces. In southern part, scattered to widespread rain almost the whole period with heavy to very heavy rainfall in some areas by the prevailing of the easterly and southeasterly winds over the Gulf of Thailand and southern part and the active low pressure cell covering the Andaman Sea during early period with highest daily rainfall of 99.5 mm at Amphoe Suk Samran in Ranong province on 6.

11 – 20 April: The southerly and the southeasterly winds prevailed over lower northern, northeastern, central and eastern parts throughout the period. In addition during mid-period, the moderate high pressure cell from China extended its ridge to cover northern and northeastern parts and the westerly trough moved to cover northern and northeastern parts while warmer air existed over upper Thailand. These caused rainfall with thunderstorm in many places of upper Thailand mainly during the second half of the period and thunderstorm with gusty wind occurred at Lampang,

Lamphun, Phere, Uttaradit, Kampheang Phet, Phetchabun, Chiang Mai, Phayao, Phitsanulok, Pichit, Chiang Rai, Mae Hong Son, Sukhothai, Burirum, Bueang Kan, Nong Bur Lam Phu, Mukdahan, Maha Sarakham, Yasoton, Udon Thani, Si Saket, Roi Et, Nakhon Ratchasima, Kalasin, Loei, Khon Khen, Surin, Ubon Ratchathani, Nakhon Paamon, Sakon Nakhon, Nong Khai, Chainat, Saraburi, Nakhon Sawan, Lop Buri, Singburi, Uthai Thani, Phra Nakhon Si Ayutthaya, Ratchaburi, Angthong, Chachoengsao, Prachinburi and Chonburi provinces. The maximum daily rainfall of 122.3 mm was measured at Amphoe Nong Wua So in Udon Thani province on 16. However, hot weather remaining in most areas of upper Thailand mainly during the first half of the period effect by the heat low pressure cell covered the mentioned areas during 13-16 and the highest maximum temperature was 39.7 °C at Amphoe Mueang in Mae Hong Son province on 15. In southern part, scattered to fairly widespread rain was found almost the whole period with heavy to very heavy rainfall in some areas by the prevailing of the southerly and southwesterly winds over southern part almost the whole period. The heaviest daily rainfall was 123.6 mm at Amphoe Suk Samran in Ranong province on 19.

21 – 30 April: The heat low pressure cell covered upper Thailand in addition with the southerly and the southeasterly winds prevailed over lower northern, northeastern, central and eastern parts during the first half of the period. After that, the high pressure area from China extended its ridge to cover the northern and northeastern parts associated with the confluence of southwesterly and southeasterly winds prevailed over upper Thailand. During the first half of the period, the weather condition was hot weather in most areas of upper Thailand with very hot weather in some areas and received rainfall mainly in central and eastern parts and then decreasing in temperature with increasing in rainfall to scattered to fairly widespread rain with heavy to very heavy rainfall in some areas. The highest maximum temperature was 41.2 °C at Amphoe Mueang in Mae Hong Son province on 22 and the maximum daily rainfall in upper Thailand was 134.9 mm at Amphoe Kamalasai in Kalasin province on 22 with thunderstorm and gusty wind was found at Lamphun, Chiang Mai, Lampang, Nan, Phayao, Tak Uttaradit, Phichit, Phitsanulok, Chiang Rai, Mae Hong Son, Kampheang Phet, Nakhon Ratchasima, Sakon Nakhon, Nong Khai, Nong Bua Lap Phu, Si Saket, Maha Sarakham, Mukdahan, Nakhon Phanom, Surin, Roi Et, Suphanburi, Angthong, Uthai Thani, Singburi, Samutprakan, Nakhon Pathom, Ratchaburi, Saraburi, Chainat and Chachoengsao provinces. In southern part, received scattered to fairly widespread rain mainly along west coast with heavy to very heavy rainfall in some areas effect by the southerly and southwesterly winds prevailed over southern part almost the whole period. The heaviest daily rainfall was 113.8 mm at Phuket Airport in Phuket province on 26.

Note : Rainfall, temperatures and natural disasters in this report were updated up to May 7, 2021.

Climatological Center, Meteorological Development Division
Thai Meteorological Department

Monthly Current Report
Rainfall and Accumulative Rainfall
April 2021

Northern Thailand

| Station | Temperature (°c) | | Rainfall (mm) | | Accumulative rainfall (mm) Since 1 January | |
|----------------|-------------------|-----------------------------|---------------|-----------------------------|---|-----------------------------|
| | Mean | Above or below normal | Actual | Above or below normal | Actual | Above or below normal |
| Chiang Rai | 26.6 | -0.5 | 83.2 | -14.7 | 170.8 | 23.4 |
| Mae Hong Son | 29.3 | -0.8 | 114.0 | 50.8 | 134.4 | 42.0 |
| Phayao | 27.4 | -1.3 | 161.8 | 72.6 | 237.7 | 103.4 |
| Chiang Mai | 28.4 | -0.9 | 142.8 | 85.5 | 179.9 | 91.7 |
| Tha Wang Pha | 27.3 | -1.0 | 285.4 | 182.9 | 381.5 | 229.5 |
| Nan | 27.8 | -1.2 | 189.2 | 89.6 | 236.3 | 87.7 |
| Lamphun | 28.2 | -1.9 | 67.8 | 23.3 | 111.4 | 46.1 |
| Lampang | 28.8 | -1.2 | 166.3 | 100.4 | 188.5 | 88.2 |
| Mae Sariang | 28.2 | -1.1 | 224.2 | 179.5 | 226.0 | 159.1 |
| Phrae | 28.5 | -1.5 | 177.8 | 95.7 | 184.7 | 60.4 |
| Uttaradit | 29.2 | -1.6 | 174.0 | 103.0 | 189.5 | 75.1 |
| Bhumibol Dam | 29.1 | -1.8 | 281.1 | 215.0 | 297.3 | 200.6 |
| Tak | 29.3 | -2.2 | 370.8 | 313.2 | 379.4 | 298.9 |
| Mae Sot | 28.3 | -0.8 | 89.2 | 44.4 | 93.8 | 23.6 |
| Umphang | 25.6 | -0.5 | 227.9 | 126.6 | 317.8 | 152.7 |
| Phitsanulok | 29.1 | -1.7 | 235.2 | 179.5 | 306.9 | 207.1 |
| Lom Sak | 28.0 | -1.2 | 247.8 | 184.6 | 272.2 | 143.3 |
| Phetchabun | 28.4 | -1.4 | 235.8 | 159.8 | 262.1 | 116.5 |
| Wichian Buri | 29.0 | -1.4 | 309.4 | 219.5 | 357.2 | 196.4 |
| Kamphaeng Phet | 29.5 | -0.9 | 139.8 | 87.0 | 188.8 | 83.9 |
| Over the area | 28.3 | -1.2 | 196.2 | 124.9 175% | 235.8 | 121.4 106% |

Northeastern Thailand

| Station | Temperature (°c) | | Rainfall (mm) | | Accumulative rainfall (mm) Since 1 January | |
|-------------------|-------------------|-----------------------------|---------------|-----------------------------|---|-----------------------------|
| | Mean | Above or below normal | Actual | Above or below normal | Actual | Above or below normal |
| Nong Khai | 29.5 | 0.0 | 166.6 | 83.2 | 269.9 | 121.1 |
| Loei | 27.5 | -0.9 | 279.5 | 176.8 | 357.5 | 193.2 |
| Udon Thani | 29.2 | -0.6 | 182.5 | 108.4 | 232.1 | 80.0 |
| Nakhon Phanom | 29.6 | 0.6 | 97.8 | -3.3 | 178.5 | -16.7 |
| Sakon Nakhon | 28.7 | -0.4 | 153.8 | 60.5 | 259.7 | 74.9 |
| Mukdahan | 29.6 | 0.0 | 138.2 | 61.8 | 153.7 | 17.4 |
| Khon Kaen | 28.9 | -1.0 | 135.8 | 46.2 | 249.5 | 92.4 |
| Kosum Phisai | 29.6 | -0.5 | 104.9 | 15.9 | 183.9 | 24.6 |
| Roi Et | 29.6 | -0.2 | 100.5 | 24.6 | 201.2 | 61.3 |
| Chaiyaphum | 29.0 | -1.0 | 101.9 | 9.3 | 153.1 | -9.6 |
| Ubon Ratchathani | 30.2 | 0.2 | 87.1 | 0.3 | 102.6 | -32.1 |
| Tha Tum | 29.1 | -1.3 | 96.7 | 10.0 | 127.3 | -24.8 |
| Surin | 29.4 | -0.4 | 114.1 | 20.8 | 193.7 | 37.7 |
| Nakhon Ratchasima | 28.7 | -1.3 | 229.9 | 157.7 | 262.7 | 129.1 |
| Chok Chai | 28.6 | -1.0 | 133.6 | 52.3 | 157.3 | 19.7 |
| Nang Rong | 28.3 | -1.2 | 334.4 | 252.8 | 375.6 | 221.8 |
| Over the area | 29.1 | -0.6 | 153.6 | 67.3 78% | 216.1 | 61.8 40% |

- NOTES :
- 1) Mean temperature is the average of daily dry-bulb temperature
 - 2) "T" is trace, rainfall amount less than 0.1 mm.
 - 3) "blank" is incomplete data.
 - 4) Temperature and rainfall are preliminary data.

Monthly Current Report
Rainfall and Accumulative Rainfall
April 2021

Central Thailand

| Station | Temperature (°c) | | Rainfall (mm) | | Accumulative rainfall (mm) Since 1 January | |
|--------------------|-------------------|-----------------------------|---------------|-----------------------------|---|-----------------------------|
| | Mean | Above or below normal | Actual | Above or below normal | Actual | Above or below normal |
| Nakhon Sawan | 29.8 | -1.6 | 178.7 | 115.0 | 188.1 | 75.1 |
| Bua Chum | 29.1 | -1.2 | 152.7 | 71.3 | 192.1 | 49.1 |
| Lop Buri | 29.4 | -1.0 | 151.6 | 70.1 | 163.2 | 37.0 |
| Suphan Buri | 29.7 | -0.7 | 169.7 | 120.6 | 207.1 | 128.5 |
| Thong Pha Phum | 28.4 | -1.4 | 192.4 | 90.6 | 248.3 | 78.3 |
| Kanchanaburi | 29.7 | -1.3 | 89.7 | 11.2 | 150.2 | 21.2 |
| Bangkok Airport | 29.2 | -1.2 | 199.8 | 111.3 | 213.4 | 64.1 |
| Bangkok Metropolis | 29.8 | -0.7 | 191.9 | 100.5 | 289.5 | 122.7 |
| Over the area | 29.4 | -1.1 | 165.8 | 86.3 109% | 206.5 | 72.0 54% |

Eastern Thailand

| Station | Temperature (°c) | | Rainfall (mm) | | Accumulative rainfall (mm) Since 1 January | |
|---------------|-------------------|-----------------------------|---------------|-----------------------------|---|-----------------------------|
| | Mean | Above or below normal | Actual | Above or below normal | Actual | Above or below normal |
| Prachin Buri | 29.5 | -0.6 | 210.1 | 92.1 | 228.0 | 36.6 |
| Kabin Buri | 28.1 | -1.7 | 236.1 | 137.3 | 300.8 | 116.6 |
| Aranyaprathet | 29.4 | -0.7 | 237.0 | 151.3 | 286.6 | 115.5 |
| Chon Buri | 29.1 | -1.1 | 146.5 | 72.4 | 271.8 | 126.0 |
| Ko Sichang | 28.7 | -1.1 | 72.0 | -5.3 | 86.8 | -66.7 |
| Pattaya | 28.4 | -0.9 | 125.8 | 61.8 | 247.2 | 100.0 |
| Sattahip | 28.6 | -1.2 | 287.3 | 208.4 | 440.8 | 258.1 |
| Rayong | 29.1 | -0.9 | 85.9 | 4.3 | 224.0 | 14.9 |
| Chanthaburi | 28.3 | -0.4 | 260.5 | 135.3 | 487.5 | 235.3 |
| Khlong Yai | 28.4 | -0.1 | 239.2 | 53.8 | 348.4 | -75.5 |
| Over the area | 28.8 | -0.8 | 190.0 | 91.1 92% | 292.2 | 86.0 42% |

- NOTES :
- 1) Mean temperature is the average of daily dry-bulb temperature
 - 2) "T" is trace, rainfall amount less than 0.1 mm.
 - 3) "blank" is incomplete data.
 - 4) Temperature and rainfall are preliminary data.

Monthly Current Report
Rainfall and Accumulative Rainfall
April 2021

Southern Thailand, east coast

| Station | Temperature (°c) | | Rainfall (mm) | | Accumulative rainfall (mm) Since 1 January | |
|---------------------|-------------------|-----------------------------|---------------|-----------------------------|---|-----------------------------|
| | Mean | Above or below normal | Actual | Above or below normal | Actual | Above or below normal |
| Phetchaburi | 28.9 | -0.8 | 44.7 | 7.8 | 74.1 | -11.2 |
| Hua Hin | 28.9 | -0.7 | 40.8 | -5.6 | 89.0 | -38.4 |
| Prachuap Khiri Khan | 28.9 | -0.3 | 92.6 | 37.1 | 169.7 | -3.8 |
| Chumphon | 28.3 | -0.4 | 116.9 | 31.1 | 155.9 | -131.2 |
| Surat Thani | 27.6 | -0.7 | 90.2 | 16.8 | 186.4 | 39.9 |
| Ko Samui | 29.4 | 0.3 | 48.9 | -34.2 | 145.1 | -159.4 |
| Nakhon Si Thammarat | 28.0 | -0.4 | 229.6 | 122.6 | 381.5 | -28.8 |
| Songkhla | 28.7 | -0.2 | 89.9 | 14.8 | 269.9 | 11.7 |
| Hat Yai Airport | 27.5 | -0.5 | 133.0 | 14.4 | 354.0 | 82.1 |
| Pattani Airport | 28.4 | 0.2 | 50.6 | -24.0 | 254.2 | 47.3 |
| Narathiwat | 28.5 | 0.2 | 61.5 | -11.3 | 344.5 | -1.0 |
| Over the area | 28.5 | -0.3 | 90.8 | 15.4 20% | 220.4 | -17.6 -7% |

Southern Thailand, west coast

| Station | Temperature (°c) | | Rainfall (mm) | | Accumulative rainfall (mm) Since 1 January | |
|----------------|-------------------|-----------------------------|---------------|-----------------------------|---|-----------------------------|
| | Mean | Above or below normal | Actual | Above or below normal | Actual | Above or below normal |
| Ranong | 28.0 | -0.8 | 239.4 | 86.8 | 255.4 | 11.6 |
| Takua Pa | 27.6 | -0.6 | 405.2 | 195.2 | 536.2 | 131.1 |
| Phuket | 29.0 | -0.4 | 222.0 | 79.1 | 331.8 | 61.2 |
| Phuket Airport | 28.7 | 0.1 | 314.7 | 160.7 | 426.7 | 109.0 |
| Ko Lanta | 28.5 | -0.5 | 251.5 | 132.5 | 286.1 | 71.7 |
| Trang Airport | 27.8 | -0.5 | 208.3 | 68.6 | 275.5 | -0.9 |
| Satun | 27.8 | -0.6 | 244.3 | 38.3 | 366.9 | -28.1 |
| Over the area | 28.2 | -0.5 | 269.3 | 108.7 68% | 354.1 | 50.8 17% |

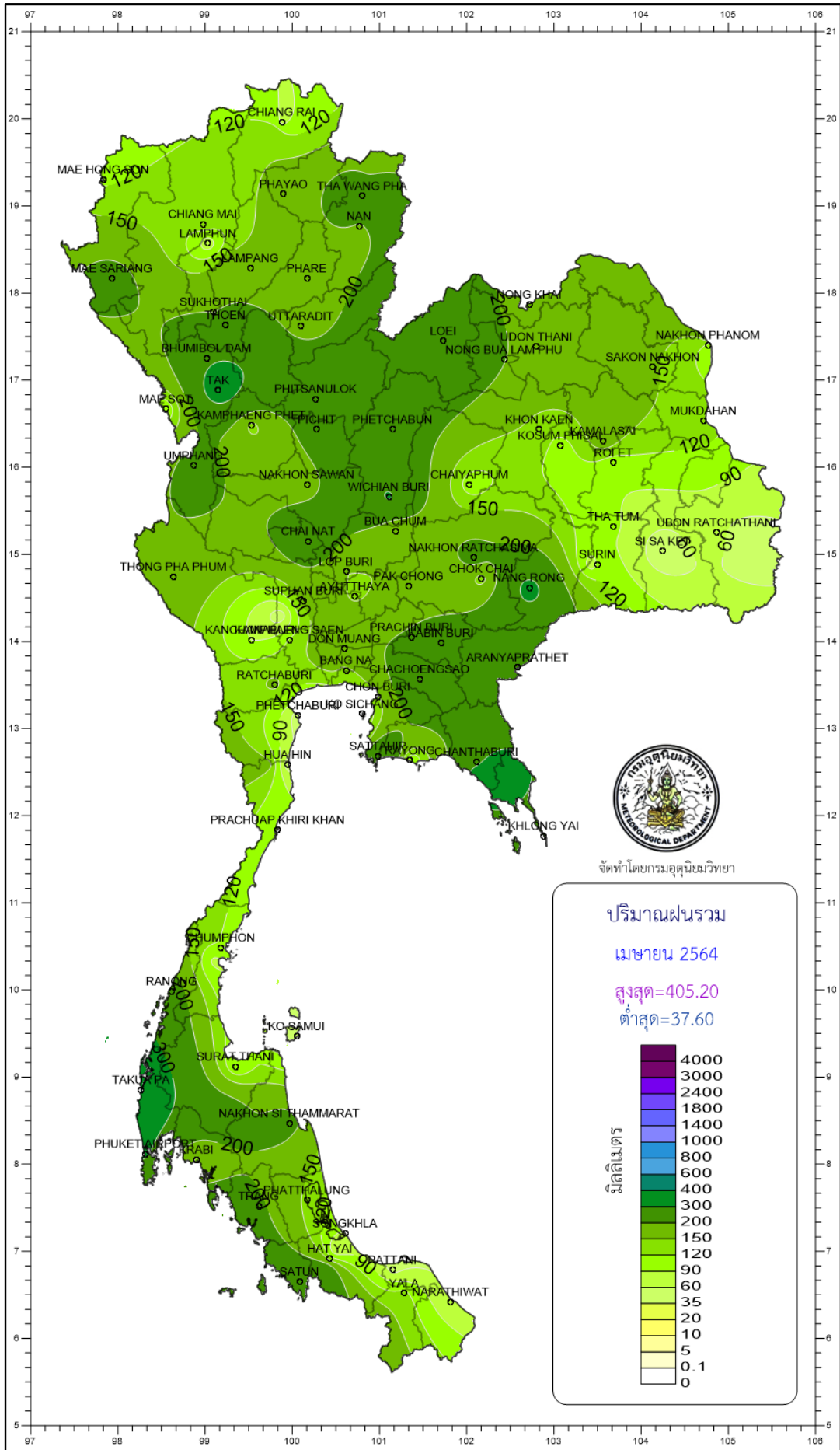
- NOTES :
- 1) Mean temperature is the average of daily dry-bulb temperature
 - 2) "T" is trace, rainfall amount less than 0.1 mm.
 - 3) "blank" is incomplete data.
 - 4) Temperature and rainfall are preliminary data.

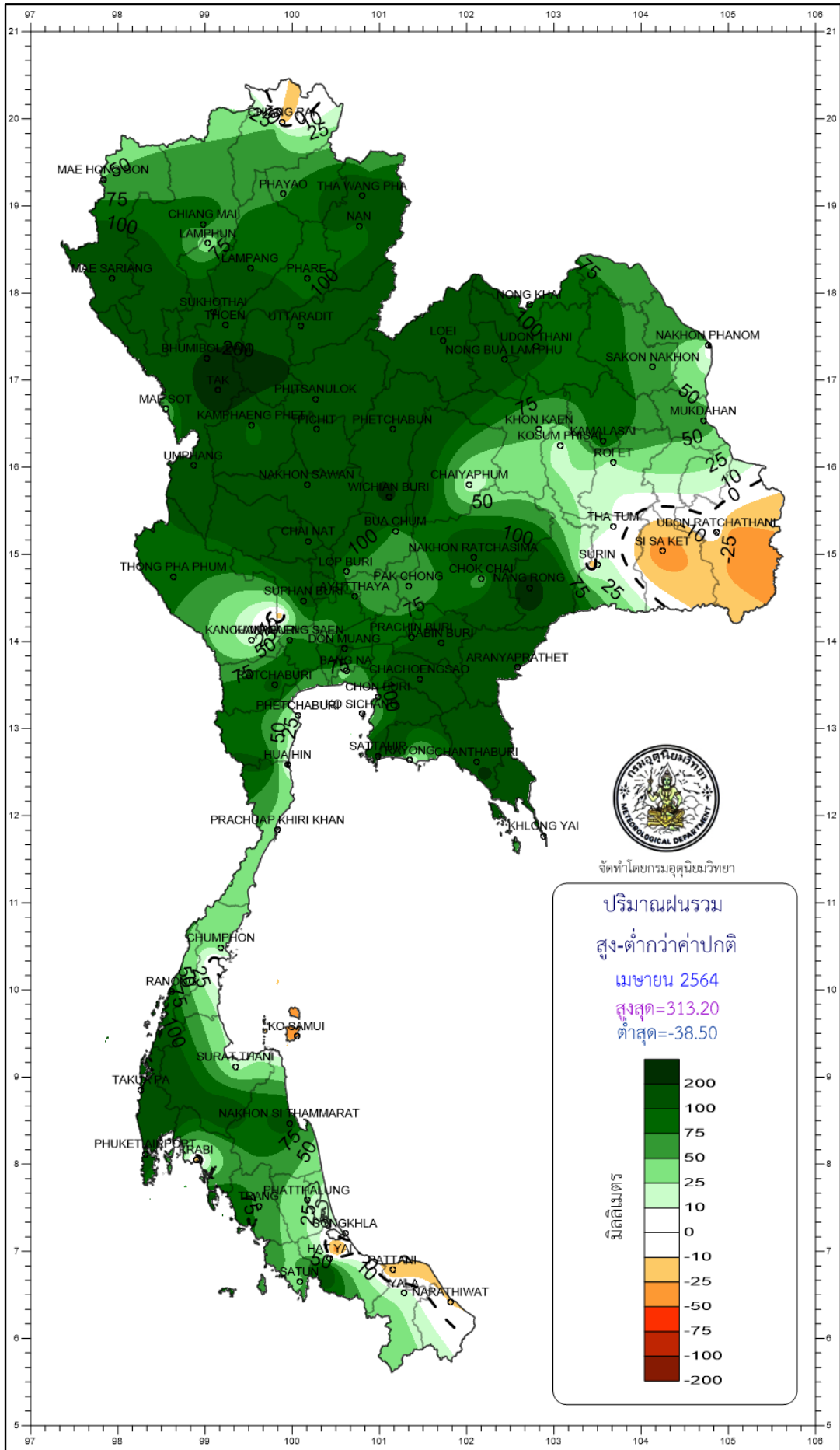
Monthly Current Report

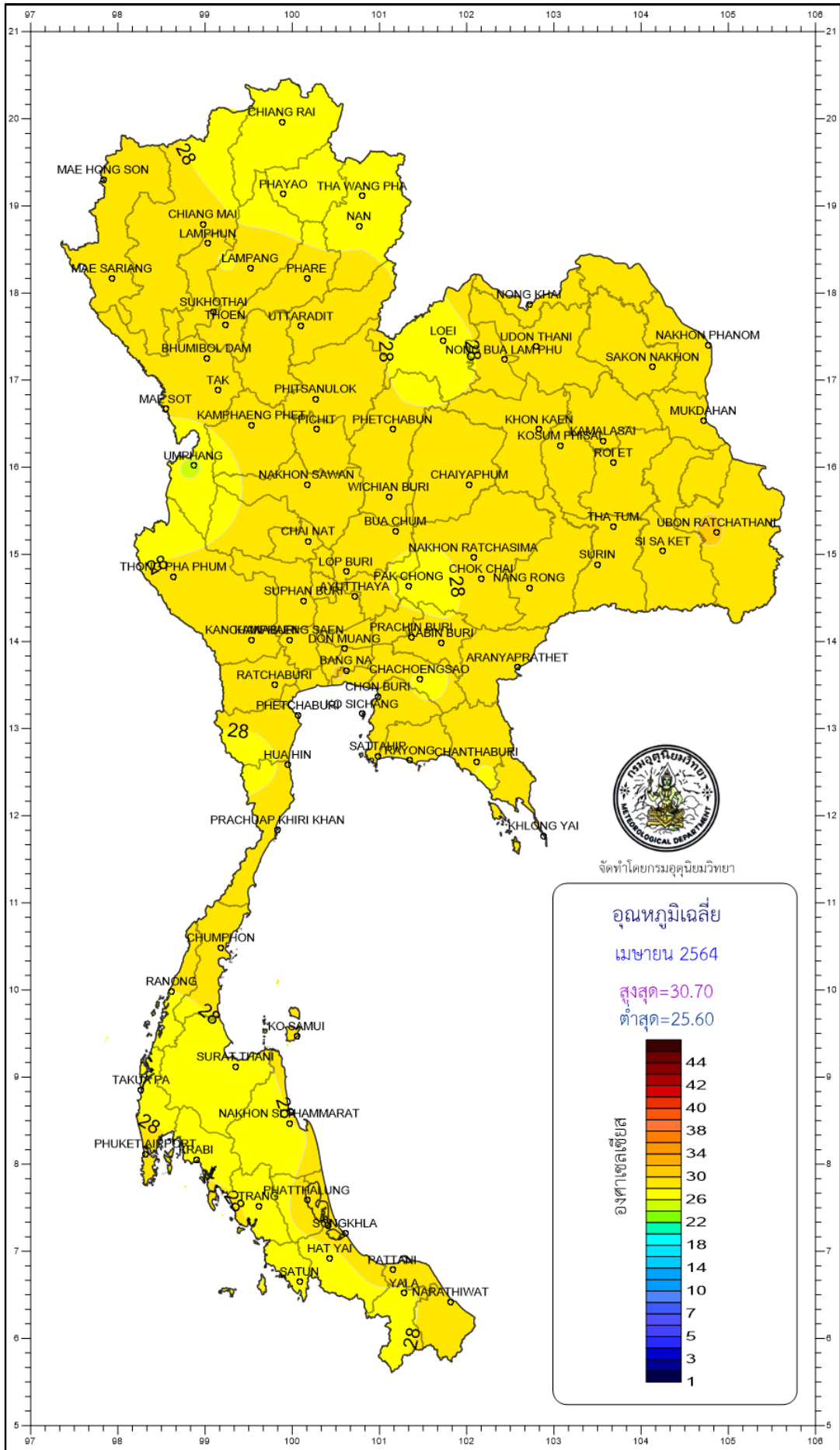
April 2021

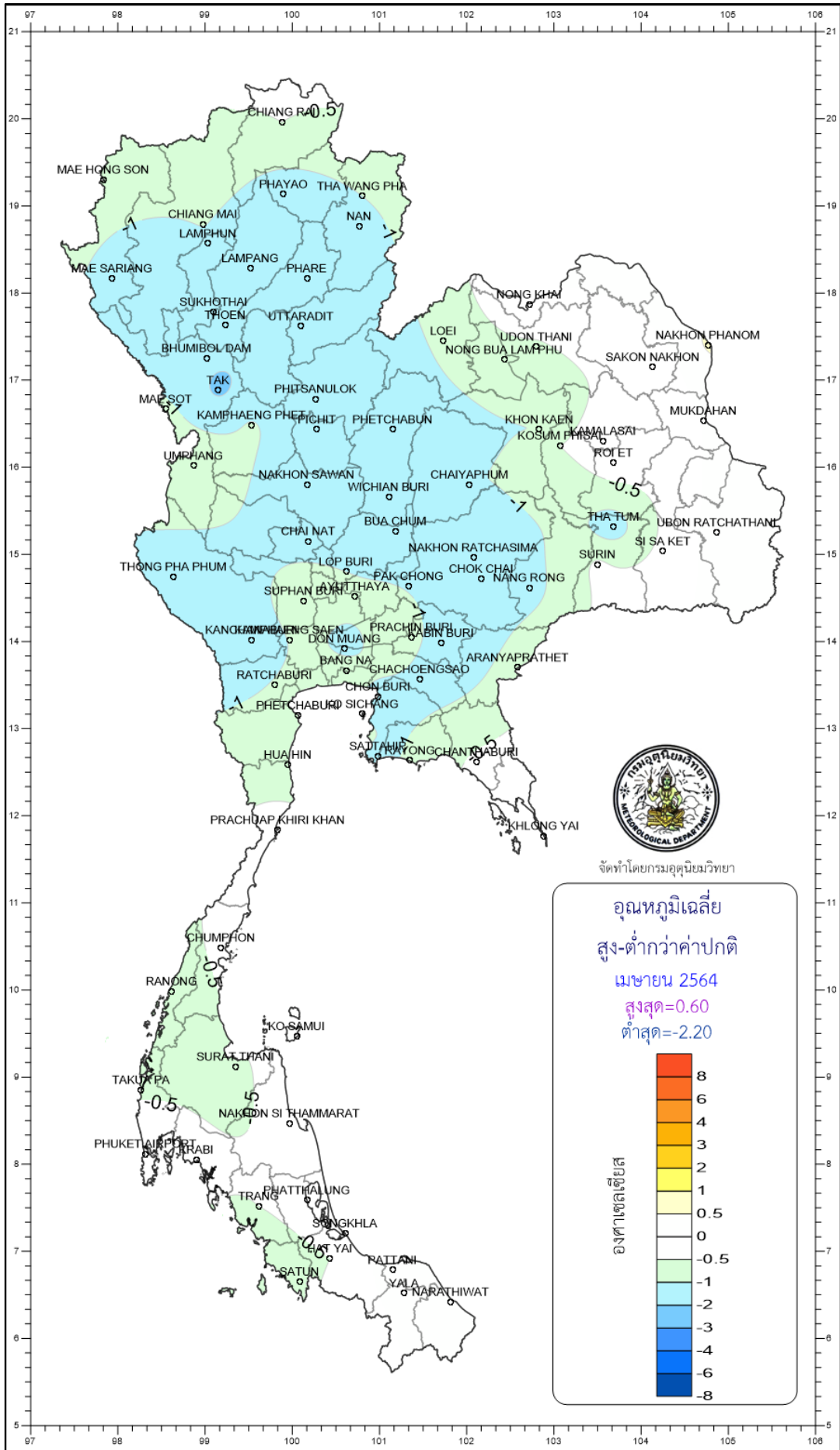
| Region | Station | Temperature (°c) | | Rainfall (mm) | | Accumulative rainfall (mm) Since 1 January | |
|-----------------------|---------------------|------------------|-----------------------------|---------------|-----------------------------|---|-----------------------------|
| | | Mean | Above or below normal | Actual | Above or below normal | Actual | Above or below normal |
| North | Chiang Rai | 26.6 | -0.5 | 83.2 | -14.7 | 170.8 | 23.4 |
| | Mae Hong Son | 29.3 | -0.8 | 114.0 | 50.8 | 134.4 | 42.0 |
| | Phayao | 27.4 | -1.3 | 161.8 | 72.6 | 237.7 | 103.4 |
| | Chiang Mai | 28.4 | -0.9 | 142.8 | 85.5 | 179.9 | 91.7 |
| | Tha Wang Pha | 27.3 | -1.0 | 285.4 | 182.9 | 381.5 | 229.5 |
| | Nan | 27.8 | -1.2 | 189.2 | 89.6 | 236.3 | 87.7 |
| | Lamphun | 28.2 | -1.9 | 67.8 | 23.3 | 111.4 | 46.1 |
| | Lampang | 28.8 | -1.2 | 166.3 | 100.4 | 188.5 | 88.2 |
| | Mae Sariang | 28.2 | -1.1 | 224.2 | 179.5 | 226.0 | 159.1 |
| | Phrae | 28.5 | -1.5 | 177.8 | 95.7 | 184.7 | 60.4 |
| | Uttaradit | 29.2 | -1.6 | 174.0 | 103.0 | 189.5 | 75.1 |
| | Bhumibol Dam | 29.1 | -1.8 | 281.1 | 215.0 | 297.3 | 200.6 |
| | Tak | 29.3 | -2.2 | 370.8 | 313.2 | 379.4 | 298.9 |
| | Mae Sot | 28.3 | -0.8 | 89.2 | 44.4 | 93.8 | 23.6 |
| | Umphang | 25.6 | -0.5 | 227.9 | 126.6 | 317.8 | 152.7 |
| | Phitsanulok | 29.1 | -1.7 | 235.2 | 179.5 | 306.9 | 207.1 |
| | Lom Sak | 28.0 | -1.2 | 247.8 | 184.6 | 272.2 | 143.3 |
| | Phetchabun | 28.4 | -1.4 | 235.8 | 159.8 | 262.1 | 116.5 |
| Wichian Buri | 29.0 | -1.4 | 309.4 | 219.5 | 357.2 | 196.4 | |
| Kamphaeng Phet | 29.5 | -0.9 | 139.8 | 87.0 | 188.8 | 83.9 | |
| Northeast | Nong Khai | 29.5 | 0.0 | 166.6 | 83.2 | 269.9 | 121.1 |
| | Loei | 27.5 | -0.9 | 279.5 | 176.8 | 357.5 | 193.2 |
| | Udon Thani | 29.2 | -0.6 | 182.5 | 108.4 | 232.1 | 80.0 |
| | Nakhon Phanom | 29.6 | 0.6 | 97.8 | -3.3 | 178.5 | -16.7 |
| | Sakon Nakhon | 28.7 | -0.4 | 153.8 | 60.5 | 259.7 | 74.9 |
| | Mukdahan | 29.6 | 0.0 | 138.2 | 61.8 | 153.7 | 17.4 |
| | Khon Kaen | 28.9 | -1.0 | 135.8 | 46.2 | 249.5 | 92.4 |
| | Kosum Phisai | 29.6 | -0.5 | 104.9 | 15.9 | 183.9 | 24.6 |
| | Roi Et | 29.6 | -0.2 | 100.5 | 24.6 | 201.2 | 61.3 |
| | Chaiyaphum | 29.0 | -1.0 | 101.9 | 9.3 | 153.1 | -9.6 |
| | Ubon Ratchathani | 30.2 | 0.2 | 87.1 | 0.3 | 102.6 | -32.1 |
| | Tha Tum | 29.1 | -1.3 | 96.7 | 10.0 | 127.3 | -24.8 |
| | Surin | 29.4 | -0.4 | 114.1 | 20.8 | 193.7 | 37.7 |
| | Nakhon Ratchasima | 28.7 | -1.3 | 229.9 | 157.7 | 262.7 | 129.1 |
| Chok Chai | 28.6 | -1.0 | 133.6 | 52.3 | 157.3 | 19.7 | |
| Nang Rong | 28.3 | -1.2 | 334.4 | 252.8 | 375.6 | 221.8 | |
| Central | Nakhon Sawan | 29.8 | -1.6 | 178.7 | 115.0 | 188.1 | 75.1 |
| | Bua Chum | 29.1 | -1.2 | 152.7 | 71.3 | 192.1 | 49.1 |
| | Lop Buri | 29.4 | -1.0 | 151.6 | 70.1 | 163.2 | 37.0 |
| | Suphan Buri | 29.7 | -0.7 | 169.7 | 120.6 | 207.1 | 128.5 |
| | Thong Pha Phum | 28.4 | -1.4 | 192.4 | 90.6 | 248.3 | 78.3 |
| | Kanchanaburi | 29.7 | -1.3 | 89.7 | 11.2 | 150.2 | 21.2 |
| | Bangkok Airport | 29.2 | -1.2 | 199.8 | 111.3 | 213.4 | 64.1 |
| | Bangkok Metropolis | 29.8 | -0.7 | 191.9 | 100.5 | 289.5 | 122.7 |
| East | Prachin Buri | 29.5 | -0.6 | 210.1 | 92.1 | 228.0 | 36.6 |
| | Kabin Buri | 28.1 | -1.7 | 236.1 | 137.3 | 300.8 | 116.6 |
| | Aranyaprathet | 29.4 | -0.7 | 237.0 | 151.3 | 286.6 | 115.5 |
| | Chon Buri | 29.1 | -1.1 | 146.5 | 72.4 | 271.8 | 126.0 |
| | Ko Sichang | 28.7 | -1.1 | 72.0 | -5.3 | 86.8 | -66.7 |
| | Pattaya | 28.4 | -0.9 | 125.8 | 61.8 | 247.2 | 100.0 |
| | Sattahip | 28.6 | -1.2 | 287.3 | 208.4 | 440.8 | 258.1 |
| | Rayong | 29.1 | -0.9 | 85.9 | 4.3 | 224.0 | 14.9 |
| | Chanthaburi | 28.3 | -0.4 | 260.5 | 135.3 | 487.5 | 235.3 |
| Khlong Yai | 28.4 | -0.1 | 239.2 | 53.8 | 348.4 | -75.5 | |
| South (East Coast) | Phetchaburi | 28.9 | -0.8 | 44.7 | 7.8 | 74.1 | -11.2 |
| | Hua Hin | 28.9 | -0.7 | 40.8 | -5.6 | 89.0 | -38.4 |
| | Prachuap Khiri Khan | 28.9 | -0.3 | 92.6 | 37.1 | 169.7 | -3.8 |
| | Chumphon | 28.3 | -0.4 | 116.9 | 31.1 | 155.9 | -131.2 |
| | Surat Thani | 27.6 | -0.7 | 90.2 | 16.8 | 186.4 | 39.9 |
| | Ko Samui | 29.4 | 0.3 | 48.9 | -34.2 | 145.1 | -159.4 |
| | Nakhon Si Thammarat | 28.0 | -0.4 | 229.6 | 122.6 | 381.5 | -28.8 |
| | Songkhla | 28.7 | -0.2 | 89.9 | 14.8 | 269.9 | 11.7 |
| | Hat Yai Airport | 27.5 | -0.5 | 133.0 | 14.4 | 354.0 | 82.1 |
| | Pattani Airport | 28.4 | 0.2 | 50.6 | -24.0 | 254.2 | 47.3 |
| Narathiwat | 28.5 | 0.2 | 61.5 | -11.3 | 344.5 | -1.0 | |
| South (West Coast) | Ranong | 28.0 | -0.8 | 239.4 | 86.8 | 255.4 | 11.6 |
| | Takua Pa | 27.6 | -0.6 | 405.2 | 195.2 | 536.2 | 131.1 |
| | Phuket | 29.0 | -0.4 | 222.0 | 79.1 | 331.8 | 61.2 |
| | Phuket Airport | 28.7 | 0.1 | 314.7 | 160.7 | 426.7 | 109.0 |
| | Ko Lanta | 28.5 | -0.5 | 251.5 | 132.5 | 286.1 | 71.7 |
| | Trang Airport | 27.8 | -0.5 | 208.3 | 68.6 | 275.5 | -0.9 |
| | Satun | 27.8 | -0.6 | 244.3 | 38.3 | 366.9 | -28.1 |
| | Over the area | 28.7 | -0.8 | 173.5 | 84.8 | 245.2 | 69.7 |
| | | | | | 96% | | 40% |

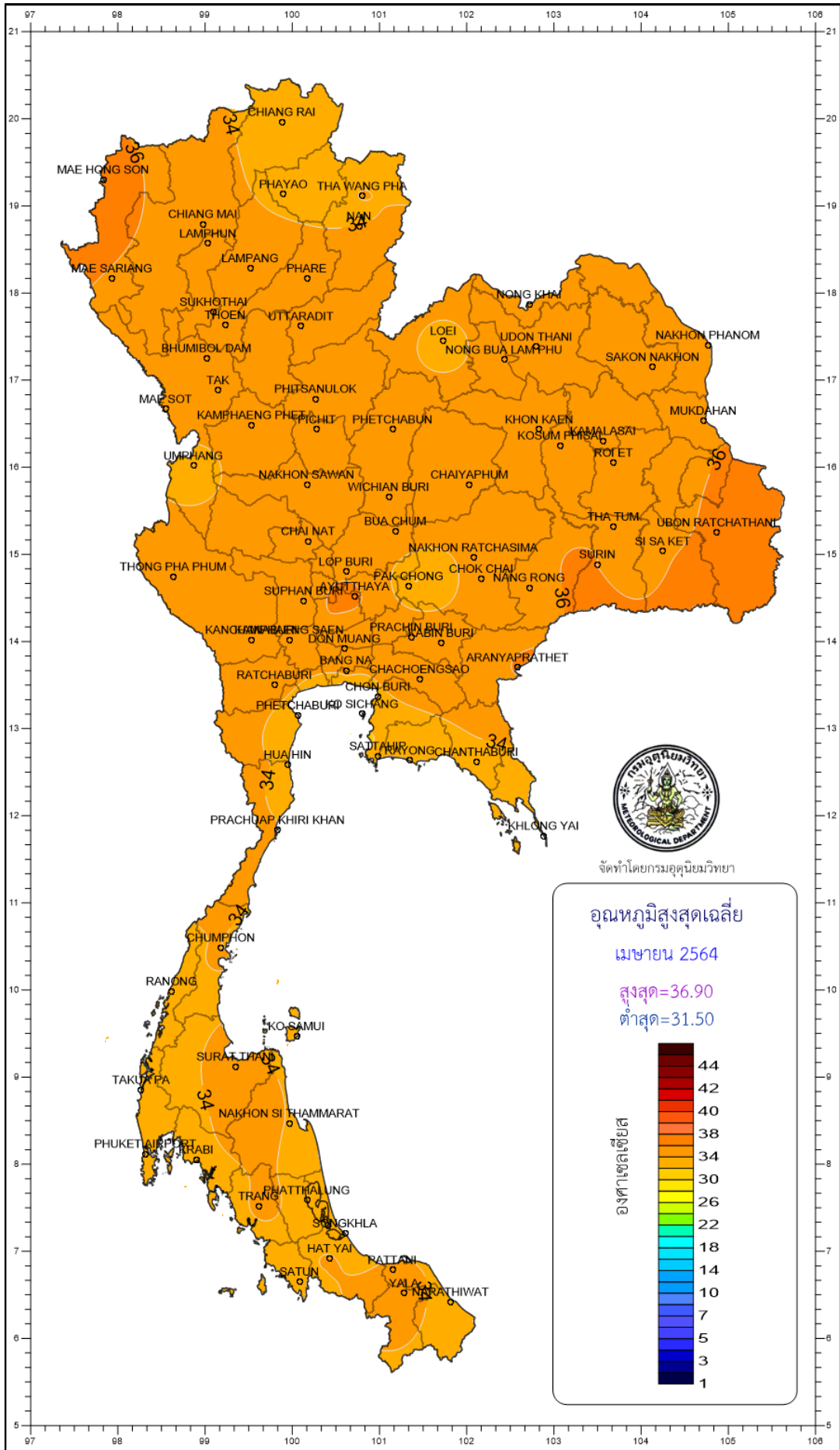
- NOTES :
- 1) Mean temperature is the average of daily dry-bulb temperature
 - 2) "T" is trace, rainfall amount less than 0.1 mm.
 - 3) "blank" is incomplete data.
 - 4) Temperature and rainfall are preliminary data.



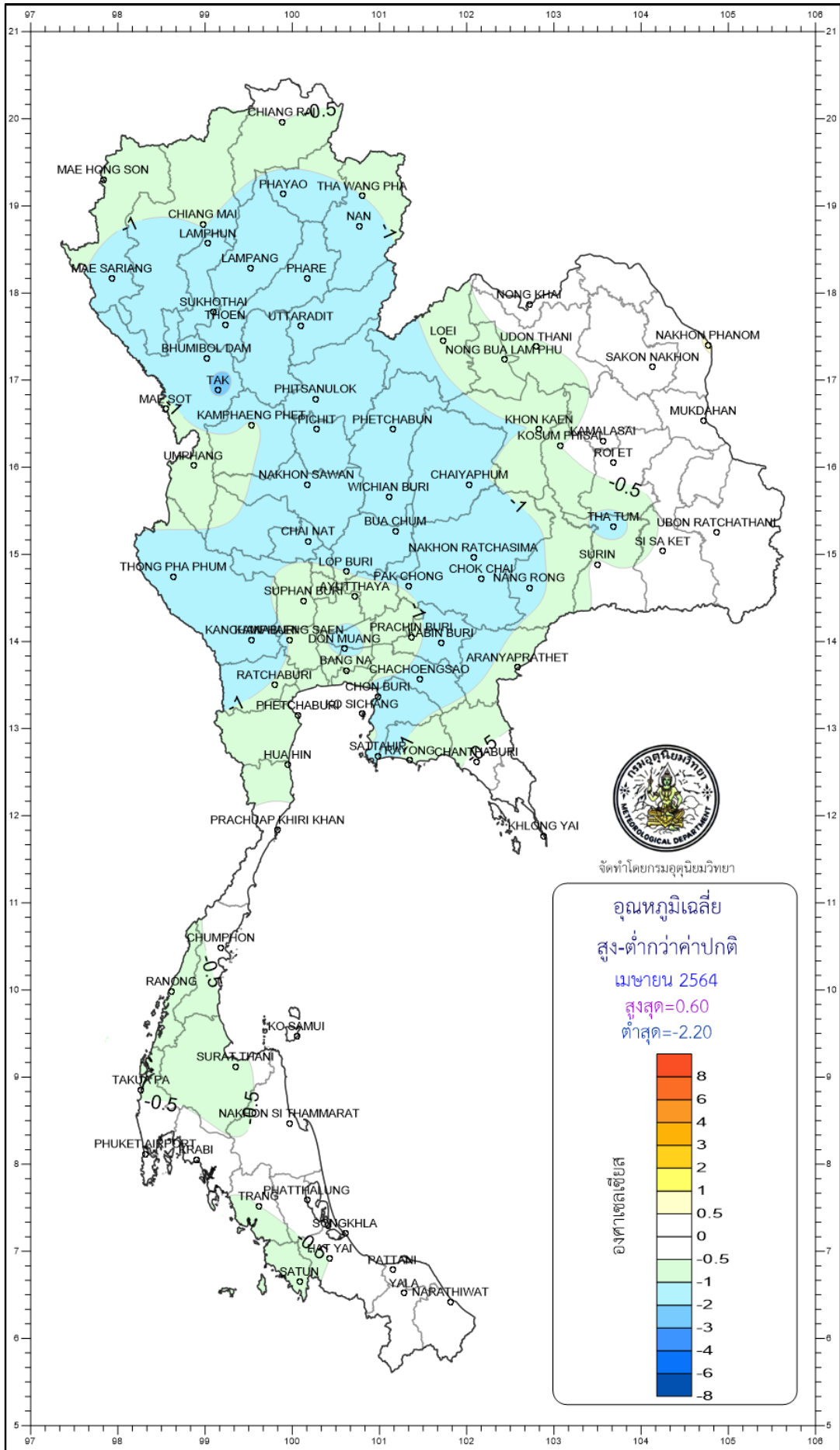


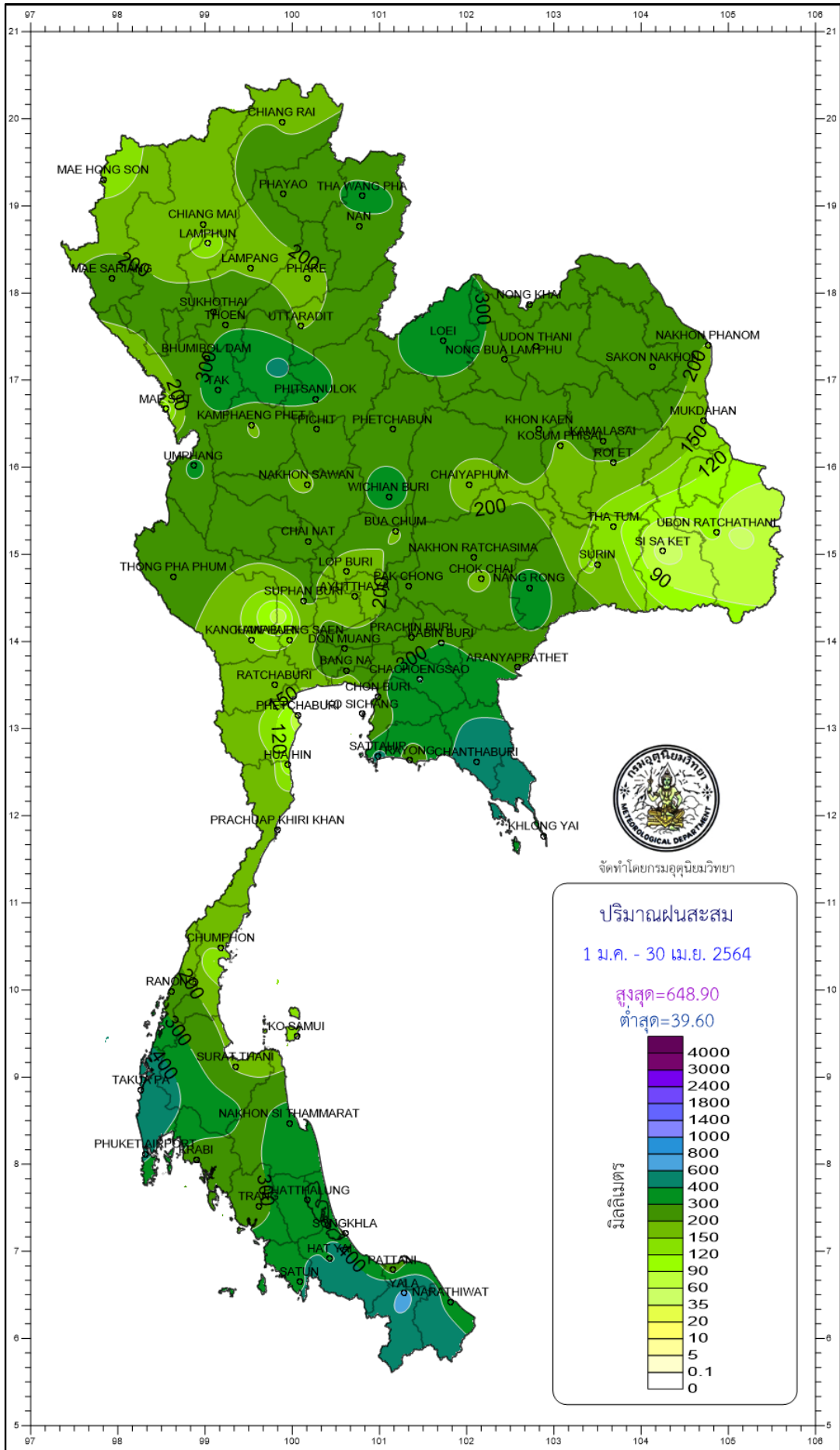


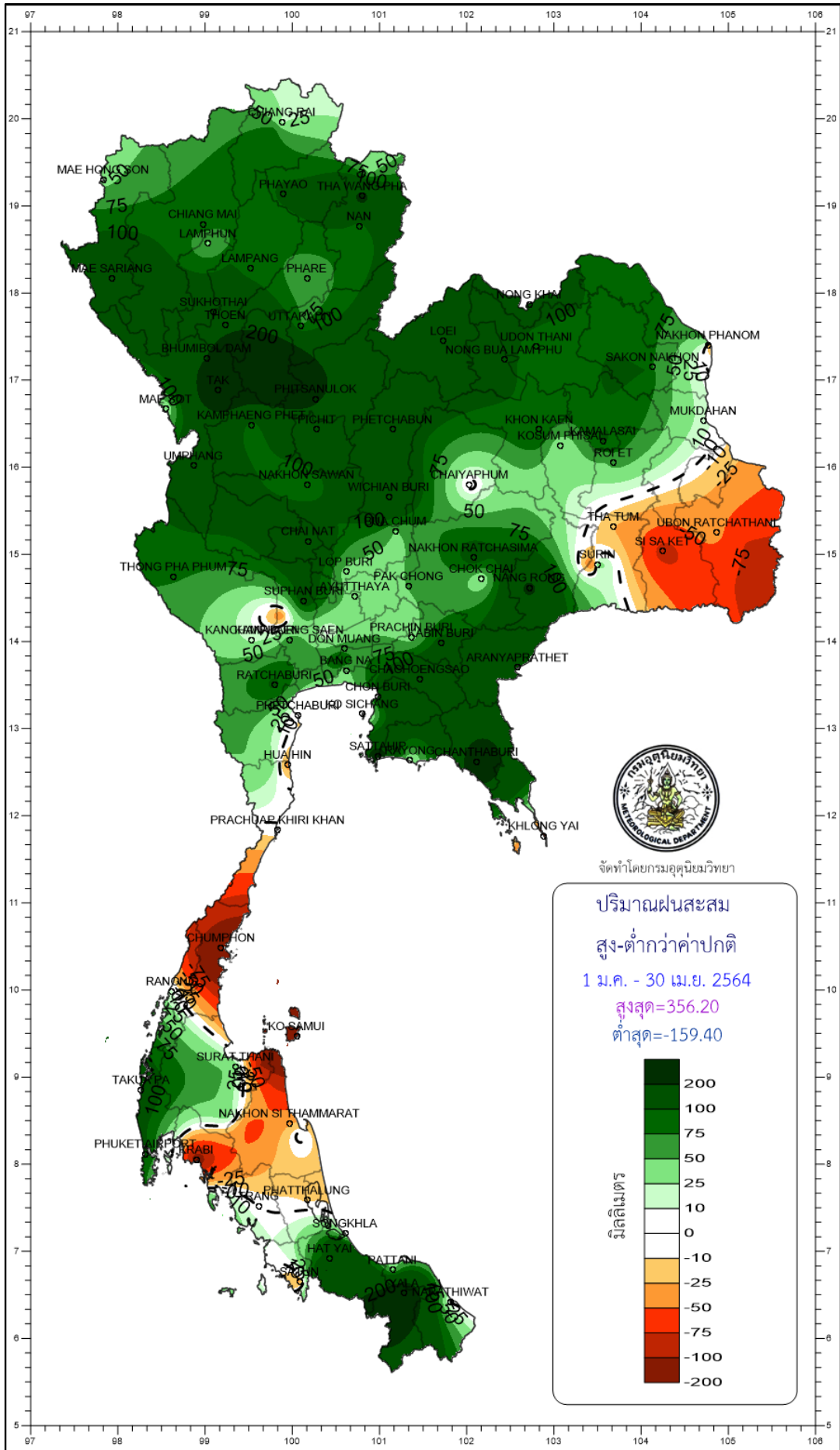




จัดทำโดยกรมอุตุนิยมวิทยา







จัดทำโดยกรมอุตุนิยมวิทยา